



AM4100P Outdoor CPE Quick installation guide V1.0



**深圳市简信通科技有限公司
Jaton Technology Co.,Ltd**

PLEASE READ THESE SAFETY PRECAUTIONS!

RF Energy Health Hazard



The radio equipment described in this guide uses radio frequency transmitters. Although the power level is low, the concentrated energy from a directional antenna may pose a health hazard.

Do not allow people to come in close proximity to the front of the antenna while the transmitter is operating.

Protection from Lightning



Before connecting this instrument to the power line, make sure that the voltage of the power source matches the requirements of the instrument. The unit must be standards.

Disposal and Recycling Information



Pursuant to the WEEE EU Directive electronic and electrical waste must not be disposed of with unsorted waste. Please contact your local recycling authority for disposal of this product.

Reduction of Hazardous Substances



This CPE is compliant with the EU Registration, Evaluation, Authorization and Restriction of Chemicals (REACH) Regulation (Regulation No 1907/2006/EC of the European Parliament and of the Council) and the EU Restriction of Hazardous Substances (RoHS) Directive (Directive 2002/95/EC of the European Parliament and of the Council).

Table of Contents

1. OVERVIEW	4
USER INTERFACE SPECIFICATION	4
2. GETTING STARTED	4
DEVICE LOGIC CONNECTION	5
INSTALLING OUTDOOR UNIT (ODU) – CLAMP.....	6
HEADER CONNECTION	6
2 LED DISPLAY	7
RF SIGNAL ADJUSTMENT.....	7
3 MANAGING CPE DEVICE	8
WEB LOGIN.....	8
DEVICE STATUS.....	9
4 FAQ AND TROUBLESHOOTING	10

1. Overview

AM4100P is a high performance LTE CPE (Customer Premises Equipment) product designed to enable quick LTE service deployment to the remote customers. It provides high data throughput and networking features to end users who need both bandwidth and roaming capabilities in the certain area.

■ User Interface Specification

Model	Description & User Interface
AM4100P	<ul style="list-style-type: none"> - Panel antenna: B48 12± 1dBi - 1 RJ45 10/100M LAN Port - SYS, SIM, ETH, and LTE (1-4) LEDs - 24V/0.5A PoE supply, ODU Power <12 Watts - Dimensions: 310 mm (L) × 122 mm (W) × 75 mm (D) - Weight: <1.5 Kg

2. Getting Started

1) Packing list

Upon receiving the product, please unpack the product package carefully. Each product is shipped with the following items:

Table 2-1 Packing List

Outdoor CPE Products	Quantity
ODU unit	1
PoE adapter	1
Power cord	1
Clamp	2
PC Ethernet Cable	1
Quick User Guide	1

If you find any of the items is missing, please contact our local distributor immediately.

2) Unpacking the Equipment

Table 2-1 lists all the standard parts that are supplied in your LTE CPE Unit Installation Package. Please take the time to unpack the package and check its contents against this list.



3) Installing the Equipment

■ Device Logic connection

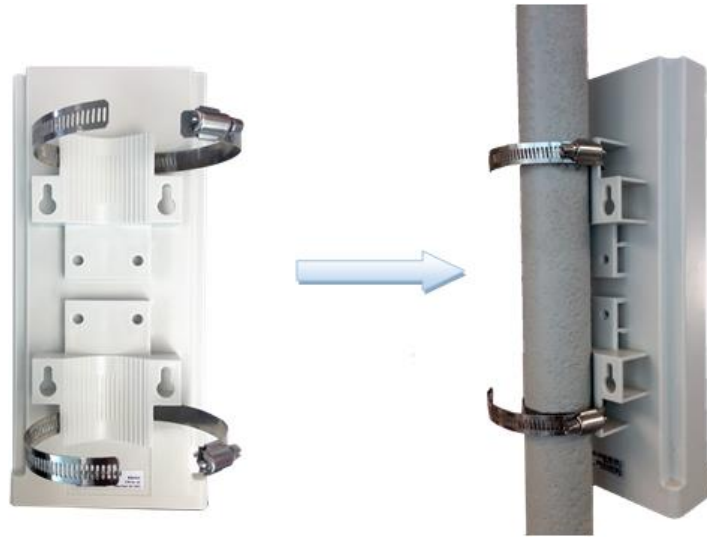
For outdoor CPE product, it is suggested that the CPE device be installed in a shaded area to avoid direct sun light exposure which may cause over heat in certain extreme weather condition.

To power on the device, the outdoor CPE must use a 24V PoE integrated DC power supply adapter. The power adapters can operate in 100-240V AC range and therefore can be used in different country. Once the device is powered up, the user should wait for about 2 minutes before the device becomes operational. For CPE with the RUN LED indicator, a slowly flashing light indicates the system has completed the startup procedure.

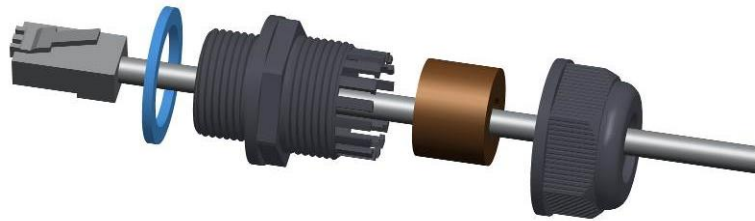
To connect PC, LAN switch or other type of IP device to the CPE product, the user should use SFTP CAT5E Ethernet cable and connect to the appropriate LAN port. Once connect the CPE LAN LED indicator should come on.



■ Installing Outdoor Unit (ODU) – Clamp



■ Header Connection



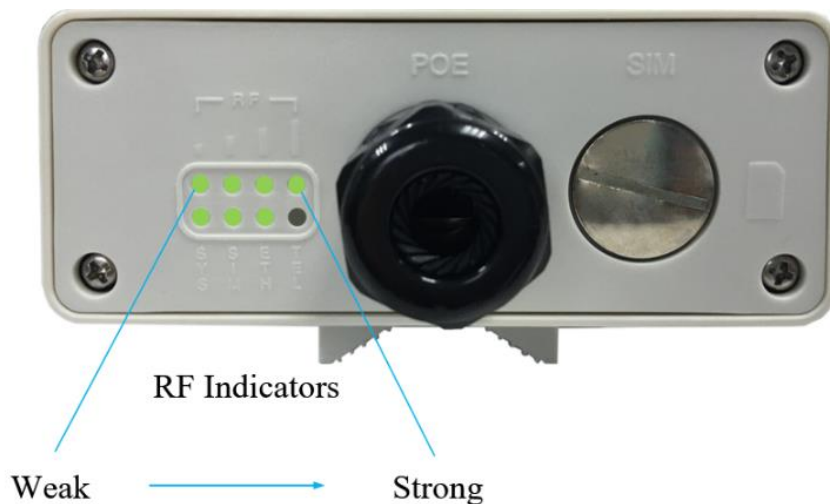
2 LED Display

Type	LED	Function	Description
ODU	SYS	System run indicator	Fast Blinking – Device is rebooting. Solid green – Device is in normal operation.
	SIM	SIM card indicator	Light is on – SIM card state is ready.
	ETH	LAN port status	Solid Green – LAN port is up. Blinking Green – LAN data activity in progress.
	RF(4LEDs)	RF Signal Strength	4 level signal strengths indication by 4 green LEDs. 1st: RSRP < -115dBm 2nd: -115dBm <= RSRP < -105dBm 3rd: -105dBm <= RSRP < -95dBm 4th: -95dBm <= RSRP

■ RF Signal Adjustment

After the CPE outdoor unit has installed, the direction of antenna's azimuth and pitch angle needs to adjust for the best signal strength. In near line of sight condition, the CPE will have the best signal when the antenna is directly pointing the base station.

User can adjust the holder to change the direction and angle of the antenna while observing the RF LED on the outdoor unit which indicates the signal strength.

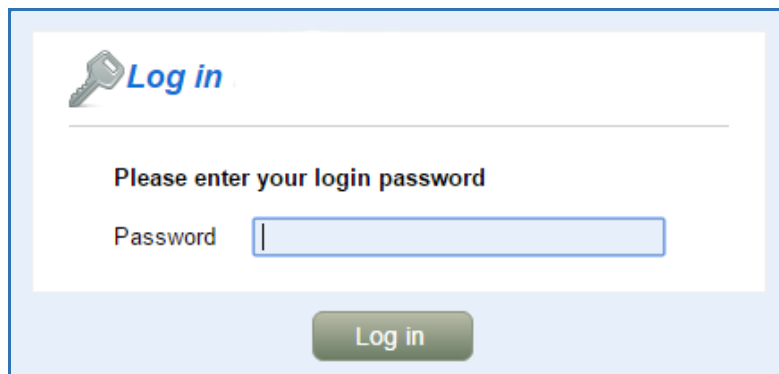


3 Managing CPE Device

AM4100P is a user-friendly LTE CPE, and very easy to configure and setup. Subscribers can just connect the device to their computer or home switch/router and the device is ready to provide Internet Services.

■ WEB Login

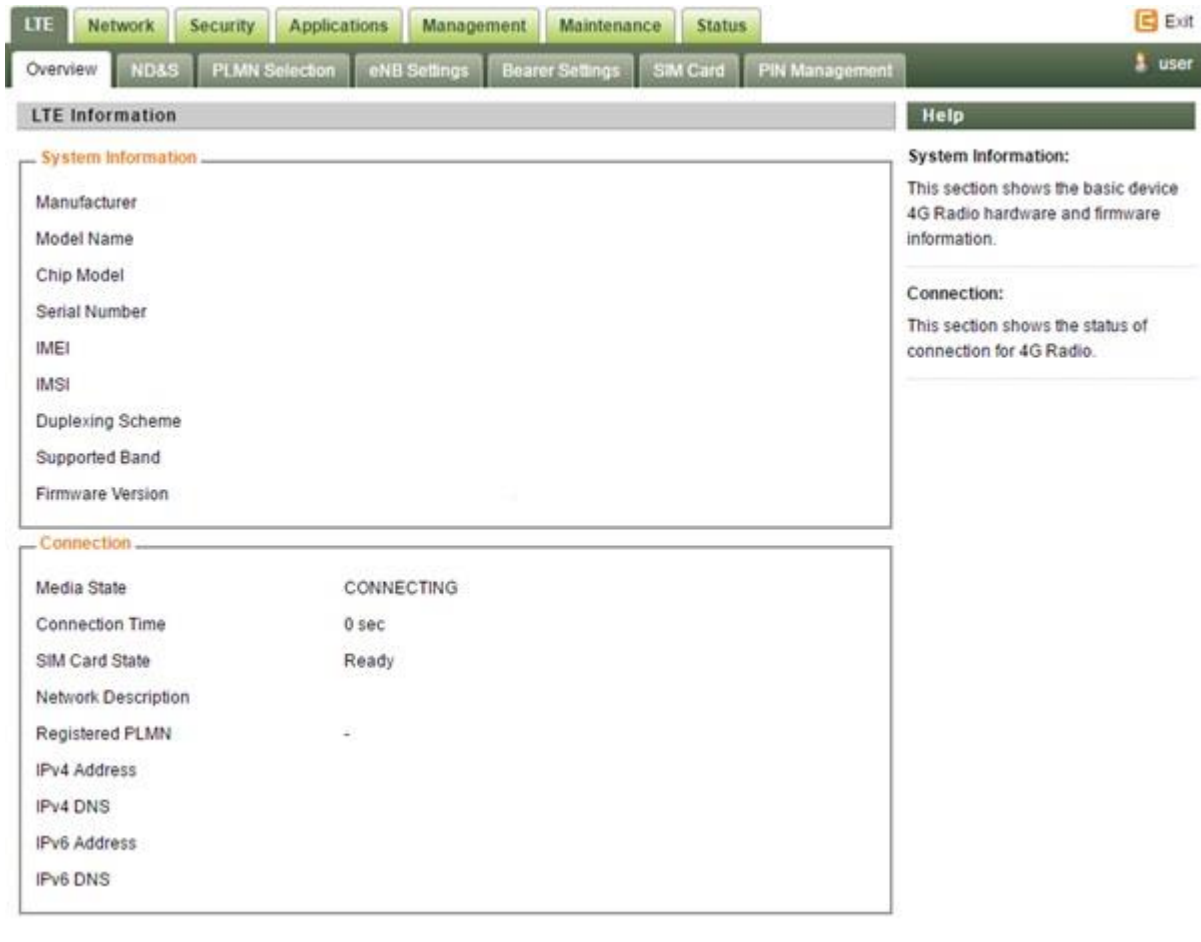
It is a preferred to setup the CPE using a Web browser from a local PC connected to device LAN port. The user should ensure that the connected PC have acquired IP address via DHCP from the device. After IP connectivity is established between the PC and CPE device, the user may launch a Web browser and specify `http://192.168.0.1` in the address bar. A window will pop up requesting password. Input the user login password and then click the “Log in” button. After successful log on, the default home page of the WEB GUI interface will appear. Note that the default user password is “admin123”.



The screenshot shows a web browser window with a light blue header and a white main area. In the top left corner, there is a key icon followed by the text "Log in" in blue. Below this, a horizontal line separates the header from the main content. The main content area contains the text "Please enter your login password" in bold. Underneath, the word "Password" is followed by a text input field. At the bottom of the form, there is a green "Log in" button.

■ Device Status

Once the user is logged in, the following window device status window will be prompted for viewing. It contains both the system information, networking and device information configured for the device.



The screenshot shows a web-based management interface with a top navigation bar containing tabs for LTE, Network, Security, Applications, Management, Maintenance, and Status. Below this is a secondary navigation bar with tabs for Overview, ND&S, PLMN Selection, eNB Settings, Bearer Settings, SIM Card, and PIN Management. The main content area is titled 'LTE Information' and is divided into two sections: 'System Information' and 'Connection'. The 'System Information' section lists fields such as Manufacturer, Model Name, Chip Model, Serial Number, IMEI, IMSI, Duplexing Scheme, Supported Band, and Firmware Version. The 'Connection' section displays a table with fields like Media State (CONNECTING), Connection Time (0 sec), SIM Card State (Ready), Network Description, Registered PLMN (-), IPv4 Address, IPv4 DNS, IPv6 Address, and IPv6 DNS. A 'Help' sidebar on the right provides explanatory text for the 'System Information' and 'Connection' sections.

System Information	
Manufacturer	
Model Name	
Chip Model	
Serial Number	
IMEI	
IMSI	
Duplexing Scheme	
Supported Band	
Firmware Version	

Connection	
Media State	CONNECTING
Connection Time	0 sec
SIM Card State	Ready
Network Description	
Registered PLMN	-
IPv4 Address	
IPv4 DNS	
IPv6 Address	
IPv6 DNS	

For further configuration instructions, please refer to AM4100P user manual.

4 FAQ and Troubleshooting

1) My PC cannot connect to the CPE.

- Re-plug the PC Ethernet cable and check if the PC LAN connection is up or showing activity.
- Check if the PoE power adapter LED is on. If it is not, check the power cord and make sure it is connected properly. Also verify that the AC power supply is available.
- If the PC LAN shows no activity and PoE adapter LED is off but the power cord is connected properly and there is AC supply, then it is likely the PoE adapter is damaged. Please contact distributor to obtain replacement part.

2) My PC cannot acquire IP from the CPE.

- First check if the NIC is up and working properly. Then check the PC NIC configuration and make sure the DHCP is enabled.
- Open the MS-DOS window, enter “ipconfig /release” and “ipconfig /renew” commands and see if PC can obtain IP correctly.
- If the problem persists, please contact the operator or distributor for further diagnose.

3) My CPE networking is not working properly.

- You may want to check if the LTE connection is up and running properly. You can do this by login the WEB GUI and check the Interface Info page.
- You may want to perform a factory reset and see if the problem is being corrected. You can do this by log into the WEB GUI using “admin” password and perform restore the unit to default factory setting.
- If the problem cannot be corrected by factory reset, please contact the operator or distributor for further diagnose.

4) I forget the login password and like to reset the unit to factory default.

- Please contact the operator or distributor and give them the IMEI of the unit. The operator or distributor can issue you a RESET password for you to enter in the WEB login window.
- After the unit is reset to factory default, you can login using the default password.